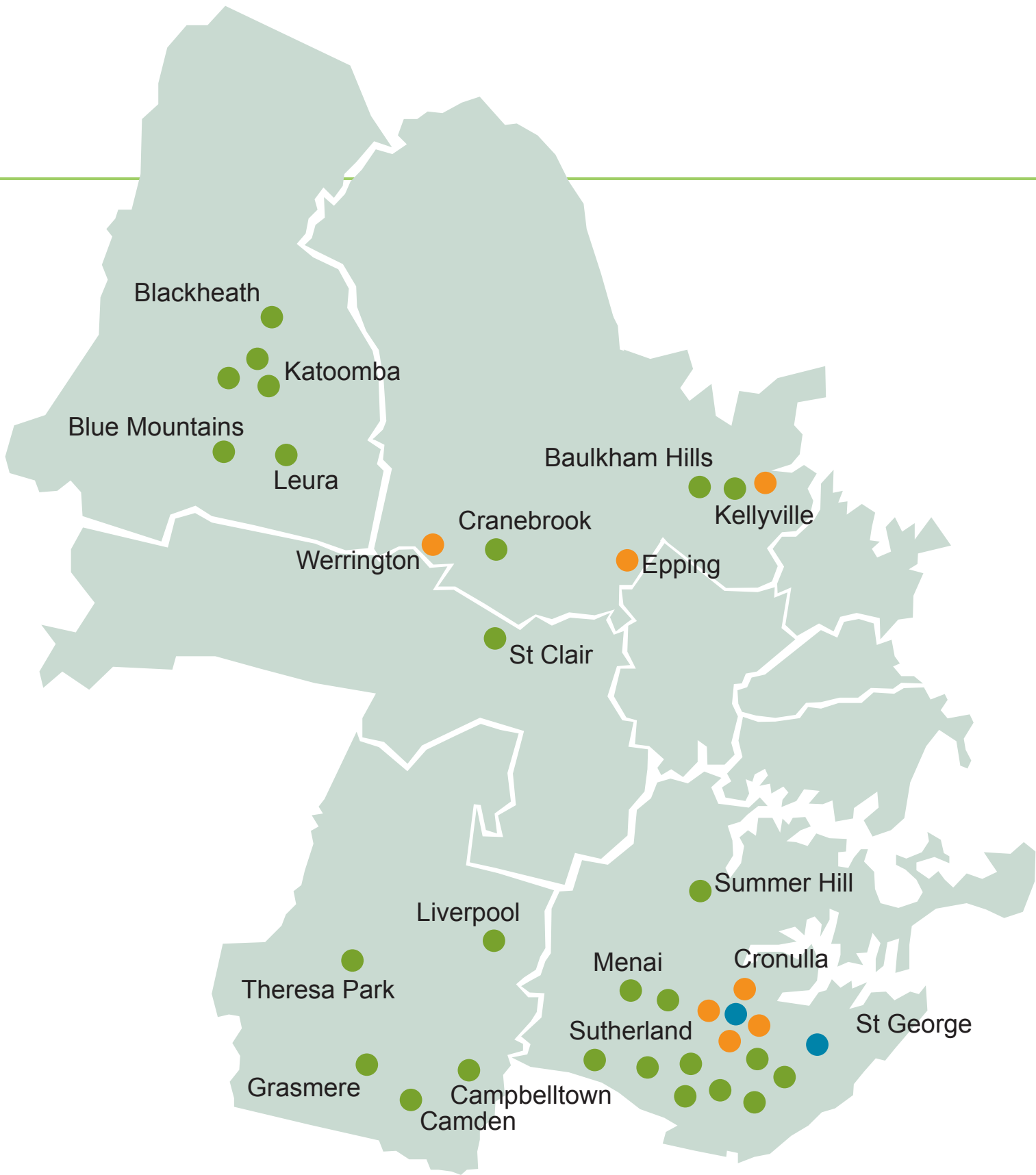




2007-2008 ANNUAL REPORT



Sylvanvale Foundation



- DAY PROGRAMS**
 - Post School options
 - Transition-to-work
 - Community Participation
 - Block Grants

- ACCOMMODATION**
 - Group Home
 - Drop-In Community Support

- CHILDREN'S SERVICES**
 - Early Learning
 - Respite
 - Out of School Hours Care
 - Teen Time



Table of Contents

Mission & Values	2
Patrons	2
Overview	3
Chairman's Report	4
Chief Executive Officer's Report	6
Sylvanvale Family Fund	8
Organisational Structure	10
Achievements 07–08	12
Our Core Themes	
Empower	16
Promote	18
Improve	20
Sustain	22
Thank you	24
Financial Report	26
Help Make a Difference	68

Sarah and her mother, Annie Cole. Sarah attends Day Programs at Rockdale Fire House.



Mission

To support the needs of children and adults with intellectual disabilities and their families through specialist care, support and therapy services focusing on the individual's potential.

Values

We believe in the individuality and worth of every person.

We recognise the individual, their rights and the importance of self determination.

We acknowledge the importance of making a positive difference to the wellbeing of children and adults with a disability.

We are committed to creating opportunities for growth, development and learning.

We will foster positive relationships and work co-operatively with individuals to achieve a common goal.

We will actively promote the contributions and successes of our community and the individuals within it.

Patrons

Patron

Her Excellency, Professor Marie Bashir
AC CVO Governor of New South Wales

Vice Patrons

Mr P Bosley

Mr P Donkin

Ms T Gartrell

Mr R Hickman

Mr M Howlin

Mr D Keogh

Ms M Knight

Mr S Singer

Mr M Tynan

The Hon Danna Vale, MP

Federal Member for Hughes

Sylvanvale Community Committee


Patron Mrs Lynne Cosgrove

Overview

The Sylvanvale Foundation has been helping adults, children and families living with disabilities since 1947. We've come a long way since our beginnings as the Handicapped Childrens Centre, NSW.

Today, our services include day programs, accommodation, private therapy, early intervention and respite programs for children and their families. The original vision, determination and passion of our founding families still thrive as the Foundation continues to grow and deliver programs of exceptional quality.

Sylvanvale is widely acknowledged as one of Sydney's leading providers of professional support services to people with disabilities. The outstanding success detailed within this Report provides a strong platform for one of the most exciting periods of growth in our history.

A photograph of two people, a man and a woman, standing outdoors in a lush green setting. The man, on the left, is wearing a brown and white sweater and has his hand near his mouth as if in conversation. The woman, on the right, is wearing a dark blue sweater and has her arm around the man's shoulder. They appear to be engaged in a conversation or preparing for an activity.

Craig Ford and Jane Chambers (staff)
about to play croquet.



Chairman's Report

I am delighted to present this the first Annual Report for the Sylvanvale Foundation.

The year 2007/08 has been an exceptional year in the history and development of Sylvanvale Foundation. At an extraordinary meeting this year, the membership voted to endorse the Board's recommendation to change our name to reflect a more contemporary image whilst retaining a strong connection with our history. At the Launch of our new name in March, it was wonderful to be joined by many of the people who have supported Sylvanvale over the years, including Life Members as well as our many dedicated volunteers and sponsors. Congratulations Mrs Marie Sedgmen on being granted Life Membership.

As you will see throughout this report, the Board and staff have been working hard to deliver on the Strategic Plan. This year saw enormous success as we tendered and received new business in accommodation, day programs and children's services.

Sylvanvale's expansion has been part of a deliberate growth strategy initiated by the Board in 2007 and delivered by the Chief Executive Officer and her Management Team who have all worked extremely hard in developing their skill and expertise.

This has resulted in substantial growth in excess of \$5M. I was also delighted that our plans to establish a new Community Participation Day Program in St George came to fruition, with the opening of the Fire House in Bay Street, Rockdale.

As reported previously, in developing the Strategic Plan the Board actively sought to focus its energies on developing the strengths of Sylvanvale by positioning the organisation as a quality service provider and aggressively tendering for new business.

Sylvanvale has been working hard planning for the future needs of people with disabilities within our community. As part of this process we have given serious thought and deliberations to the future needs of the people we support and their carers as they grow older.

In 2007–2008 we have undertaken extensive planning to strengthen and research this commitment made in our Strategic Plan. In particular this has led to two significant projects emerging.

The re-development of the land at Mikarie Place, Kirrawee has been identified as a key project in Sylvanvale's Strategic Plan. After gaining the approval of the Crown Lands Department, and the support of the Sutherland Shire Council we are confident government will find the projects value for money and useful in expanding the service system to support people with disabilities. The two developments will provide for:

1. A Child Care Centre offering:

- an integrated Child Care Centre supporting an additional 59 children.
- expansion of Early Learning Services to 36 children.
- improved opportunity for the integration of children with and without disabilities.

2. Residential Care offering:

- residential accommodation to support 18 people with disabilities living in the Sutherland Shire.
- 18 extra community places for people with disabilities.

The development of innovative accommodation options within the Sutherland Shire has strong support from local community groups as well as the Sutherland Shire Disability Action Group Inc. who have been lobbying for solutions to meet the local needs of Sutherland Shire.



Whilst conducting planning for these projects, the Child Care Centre and Residential Care Accommodation, Sylvanvale has been engaged in lobbying both State and Federal Government to provide funding. To date we have received some grants from the NSW Department of Education to support the integration of education services. We will continue our lobbying activities as well as seeking the support of the community by way of the Sylvanvale Family Fund to raise funds to establish these much needed services.

I take this opportunity to thank all our community groups who have supported the many events and activities during the past year. Thank you to the Returned Services Clubs in the Sutherland Shire and the Blue Mountains as well as the Rotary Clubs and many sponsors. Sylvanvale looks forward to this support continuing.

Our Ladies Auxiliary disbanded as a fundraising committee in November 2006, yet continues to make an enormous contribution as a social group.

Sylvanvale continues to be honoured to have the Governor of New South Wales, Her Excellency Professor Marie Bashir AC, CVO as our Patron.

Finally, I acknowledge the enormous contribution of my Board colleagues who continue to volunteer their time and expertise. The support from Dennis Davies, Deputy Chariman, Richard Gould in his role as Chairman of the Service Development Master Planning Committee and the Chairman of the Audit, Risk and Compliance Committee, David Kelly is greatly appreciated.

Sylvanvale is most fortunate to have the active and valued contribution in their various areas of expertise of Board Directors, Mike McDonald, Alan Bish, Gael MacArthur, Marie Sedgmen and Brian Fitzgerald. Corporate governance has always been the guiding principle and is supported and followed by the Sylvanvale Board.

In closing, I extend the Board's thanks to Pauline Stanley, our talented and energetic Chief Executive Officer and her dedicated Management Team whose hard work has achieved so much this year.

May we look forward to an exciting new phase of growth as the Sylvanvale Foundation continues to expand its programs and its footprint, actively reaching out across the Sydney region to provide greater support for people with disabilities, their families and their carers.

Lorna Stone
Chairman of the Board, Sylvanvale Foundation



Chief Executive Officer's Report

It is with great pride that I present my Report for 2007–2008. Looking back, this has been a truly remarkable year on many fronts.

In March this year we held an event to launch the Sylvanvale Foundation. Friends, families and community members joined us as we celebrated the occasion and announced our plans for growth.

Growth

At the close of 2007 - 2008 we had secured grants in excess of \$5m via the NSW State Government's '*Stronger Together Initiative*'. These grants will become available over a two year period and deliver increased supported accommodation to people with disabilities. Sylvanvale's footprint has expanded into Camden, Baulkham Hills, Inner West, Werrington and Epping. We were delighted that the Hon. Kristina Keneally, Minister for Disability Services, Minister for Ageing joined us to open the new Day Centre as we move across the bridge into St George.

Sustainability

Sylvanvale has completed an extensive financial review of the operation of its day programs with the Department of Ageing Disability and Home Care. The review concluded that one-off funds would be made available to support the deficit in this program. These funds will ensure Sylvanvale can continue to deliver a five day service to recipients of block grant day programs.

Quality Programs

Increased grant revenue has enabled Sylvanvale to invest in a Learning and Development Coordinator, who, along with our specialist clinical team, will provide staff with formal training and skill development, improving program quality and client outcomes.

Continuous Improvement through Accreditation

Government surveillance audits provide a valuable opportunity for review and continuous improvement. Once again Sylvanvale participated in five audits. Each audit concluded that Sylvanvale is providing high quality services, delivering good outcomes for people with disabilities with a robust quality management system and continuous improvement strategies in place. This is a reflection of the quality, commitment and expertise of our team who I would like to thank for their continued efforts.

Last year Sylvanvale secured grants to provide accommodation to children. In doing so we committed to undertake accreditation under the Office of Children's Guardian. We have completed a lengthy process and hope to be accredited in July 2008. This will establish Sylvanvale as a specialist provider of programs to support children with disabilities who are in the care of the Minister.

Future Needs and Planning – Children

Sylvanvale has committed to expand the range of services offered to children and families and has opened two new specialist group homes for children with disabilities. We have reviewed our early learning and education services and resolved to consolidate and limit our service provision to children up to the age of six years. This ensures the education programs we deliver remain viable and continue to support children and families. In expanding our children's services we plan to open an integrated child care centre to provide long day care to children with and without disabilities.

This new initiative is based upon research in both Australia and abroad which concluded that children who have access to early intervention services that focus on a child's ability rather than disability, working on their potential.



Future Needs and Planning – Adults

Supporting people with disabilities to find appropriate accommodation remains a challenge for Sylvanvale, State and Commonwealth Governments. This year the Disability sector received an enormous boost in growth funding through the New South Wales Government's '*Stronger Together Initiative*' as well as Commonwealth Funds announced by the Rudd Government.

Sylvanvale undertook an extensive research and planning project to understand and plan for future accommodation needs of adults with a disability. The result is a dynamic new community living project offering specialist accommodation on the Mikarie Place site. This project will offer supported accommodation for people with intellectual disabilities.

IT Systems

Last year we completed a comprehensive review of our IT support system and have been busy implementing the review. Already the investment is delivering improved communications, providing staff with information that is more readily accessible at all service outlets. Improved technology is a crucial investment as we expand our geographic footprint and add more programs.

Community

As part of our Strategic Plan, Sylvanvale is committed to expand as funds become available through the NSW State Government's '*Stronger Together Initiative*'. As we move into new areas we will focus on raising the Sylvanvale profile and building strong, long term networks within each new community. We look forward to forming new relationships and working alongside other community organisations in the Baulkham Hills Shire, Camden, Campbelltown, Inner West and Epping.

Thank you!

At the heart of Sylvanvale is the wonderful broad based support we continue to receive from our many volunteers and community groups, life members, and members. Special thanks must go to our major sponsors, Caltex, GIO, Allco Finance, the Golden Stave Foundation and the Rat Pack Social Club.

As always, we are indebted to the dedicated team of volunteers led by Trevor Sanger and Rob Aitken who coordinate the Annual Golf Tournament sponsored by Allco Finance. This group is joined by Glenn Wheeler, who generously volunteers his time and skilfully hosts the event. Last year's event raised funds to build and improve facilities at the Activity Centre which supports as many as 110 people from the Sutherland and St George area. We are very grateful to the many local business and community members who participated in this event.

In March, Sylvanvale launched a Capital Appeal to help raise the capital funds to build the Community Accommodation and the Integrated Child Care Centre at Mikarie Place. The initial response to the 'Sylvanvale Family Fund' has been very promising.

Finally, I wish to thank the Board of Sylvanvale who have dedicated many hours to supporting both myself and the staff at Sylvanvale. This team is led by the Chairman, Mrs Lorna Stone who has brought together an amazingly talented Board. In my role as Chief Executive Officer I am very fortunate to be supported, challenged and guided by such a dynamic, energetic and professional team whose vision is for Sylvanvale to continuously improve and support people with disabilities and their families.

Pauline Stanley
Chief Executive Officer, Sylvanvale Foundation

A brighter future for families coping with disabilities.

A proud heritage

The Sylvanvale Foundation was established by parents of children with intellectual disabilities in 1947. Their goal was to provide support for parents of children with disabilities as well as advocate for services for their children. As a result of their efforts, a school was initially established at Flora Street, Sutherland, moving to Mikarie Place, Kirrawee in the early seventies.

We've come a long way since our beginnings as the Handicapped Children's Centre, NSW but the Sylvanvale Foundation is still driven by the desire to make positive, longer term improvements to the quality of support services for people with disabilities and their families.

This year, the Sylvanvale Foundation launched a major initiative to support the changing needs of local families – The Sylvanvale Family Fund. Its purpose is to provide the financial resources to develop key long term projects as identified by the Foundation.

Today's need: Improve capacity

In the past 12 months we have engaged consultants and surveyed families, residents and carers to identify the key long term support needs of current and future families in our care. A few clear facts emerged:

a) People with disabilities want the choice of where and how to live as they grow older. Accommodation must be flexible to meet their changing needs as they age. The NSW State Government's "*Stronger Together Initiative*" identified the vital importance of bundling services "to enable people to continue to live in their own home."

b) Some existing community living options no longer meet the longer term needs of their residents with disabilities. The Sutherland Shire Disability Action Group states that there are 159 families seeking accommodation in the Sutherland area with similar numbers in the St. George area.

c) Families of children with significant disabilities are often unable to find places in commercial long day care centres.

d) Vacant land at our premises at Mikarie Place, Kirrawee could be better utilised.

Our Solution: An ambitious plan

The Sylvanvale Family Fund will provide for the re-development of the current site at Mikarie Place to accommodate two major projects to address the above needs. Sylvanvale has gained the approval of the Crown Lands Department, and the support of the Sutherland Shire Council for the land to be developed. The re-development will provide:

a) **Residential care** providing accommodation to support 18 people with disabilities living in the Sutherland Shire. The proposed development offers the flexibility to easily accommodate the changing needs of people with disabilities. It will comprise a 10 bed high support unit which will provide specialist care for people with disabilities and 4x2 bedroom hostel style units for more independent living.

b) **An integrated child care centre** supporting an additional 59 children, expanding Early Learning Services to 36 children and offering improved opportunity for integration with children without disabilities. Integration of this type improves the learning outcomes for children with disabilities through an innovative co-location model. The Centre will also provide much needed additional long day care places, especially those that can support children with complex intellectual and physical disabilities.

Making it happen

To date, Sylvanvale is in receipt of a capital improvement grant of \$210,000 from the State Government to support part of the costs of the redevelopment for these projects.

In July 2008 a donation envelope for the Fund was distributed by Council to 78,000 ratepayers in the Sutherland Shire.

Families with disabilities are missing out on the opportunity of appropriate accommodation options and long day childcare. On their behalf we are seeking support from the broader community for the Sylvanvale Family Fund.



Sylvanvale Accommodation Care Centre



Sylvanvale Child Care Centre



Help us help more families in our Shire



Please give generously to the new Sylvanvale Family Fund

Yes, I would like to help the Sylvanvale Family Fund

I'd like to give \$ _____
 or my choice of \$40 \$50 \$75 \$100

TITLE: MR MRS MSS MS DR (please circle)

NAME: _____ TYPE: VISA MASTERCARD AMEX

ADDRESS: _____ No _____

STATE: _____ P CODE: _____ NAME ON CARD: _____

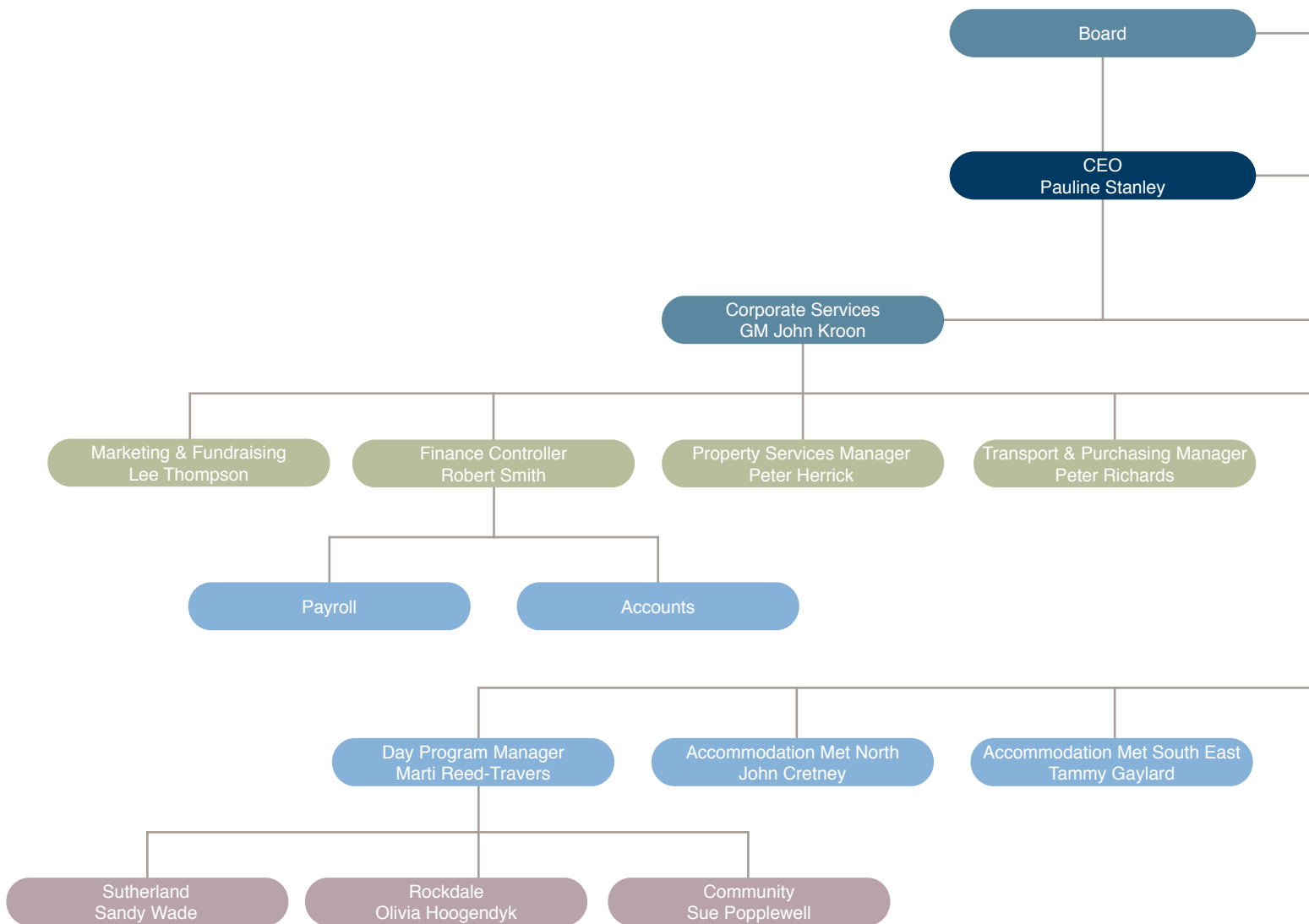
PHONE () _____ EXPIRY DATE: _____ SIGNATURE: _____

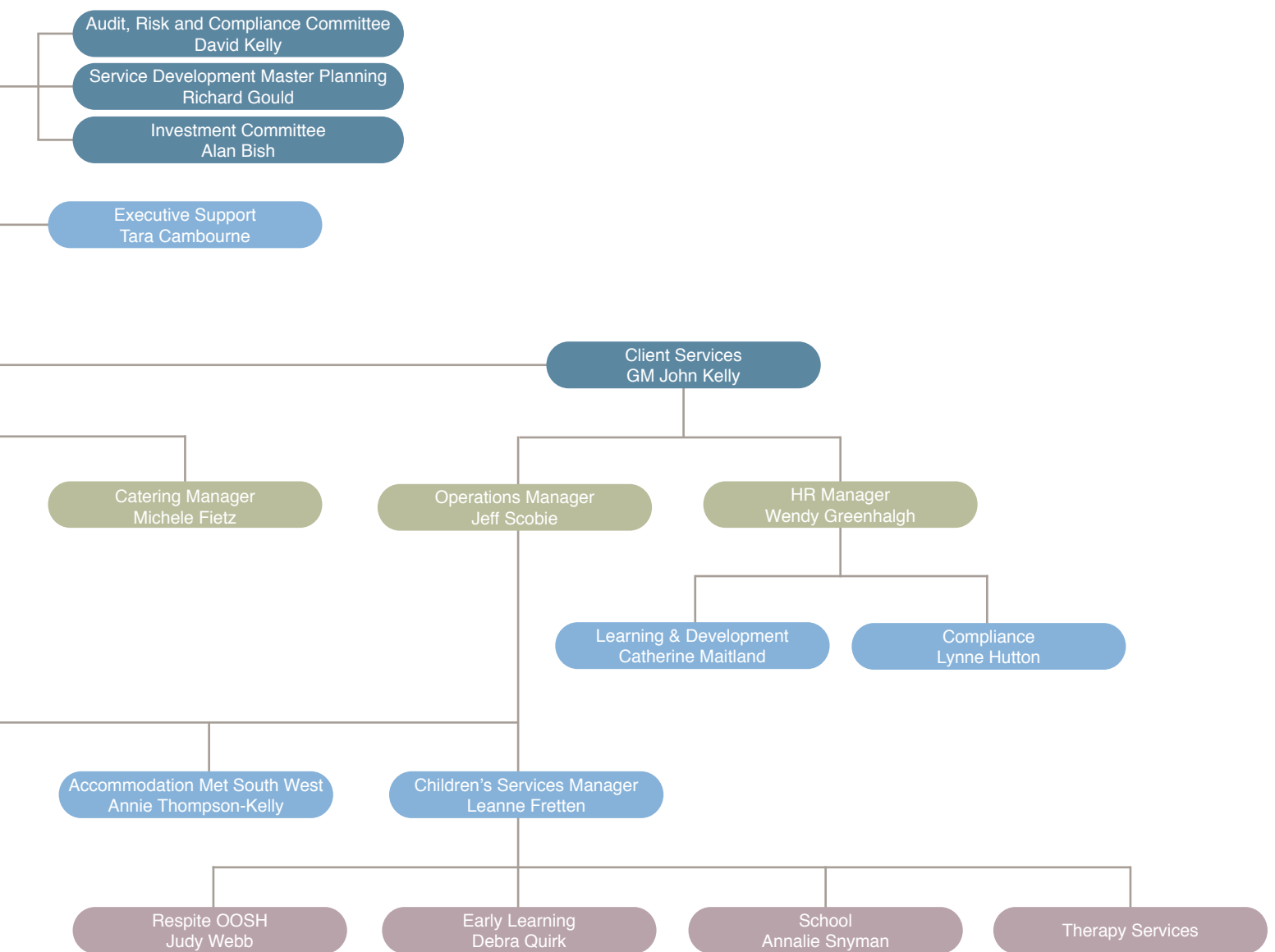
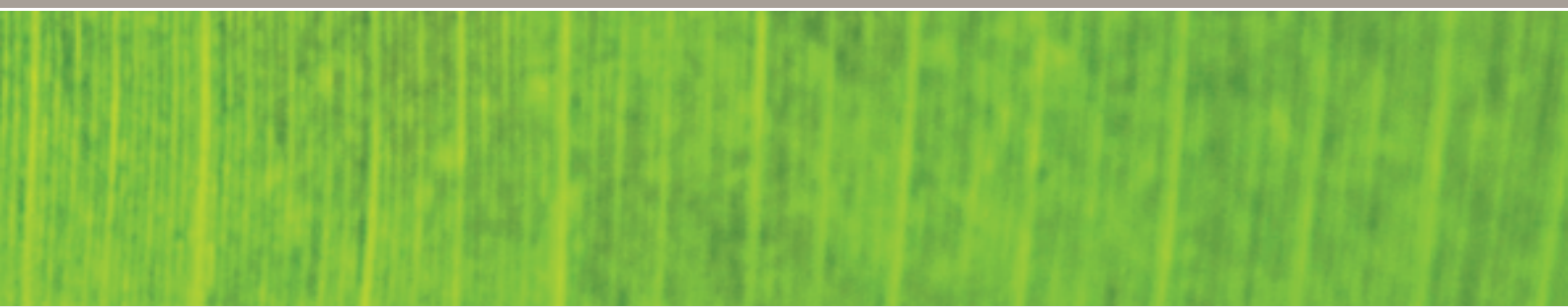
EMAIL: _____

SYLVANVALE FOUNDATION IS A REGISTERED CHARITY QUALIFYING FOR 50% AND OVERLAP TAX DEDUCTIBILITY. WE RESPECT YOUR RIGHT TO PRIVACY AND DO NOT DISCLOSE PERSONAL INFORMATION WITHOUT YOUR PERMISSION.

I would like to receive information about regular monthly giving to the above address.

Organisational Structure







In a year of unprecedented growth, which included nine new outlets, a 28% increase in government funding, a 54% increase in volunteers, the launch of our new name and the successful completion of four external audits, we asked each manager to list their highlights.

Childrens Services

- School achieved Board of Studies registration for 2007-2011
- Through the Westfield Shop For Your School Initiative Sylvanvale has initiated a recycling program following the receipt of the Visy recycling package
- Capital Grant of \$210,000 received under Intervention Support Program, to upgrade the early intervention service facilities and enable the service to be co-located with a mainstream child care service
- Innovative Sylvanvale After School Care Program presentation given at Macarthur Disability Conference
- Two staff completed the Strategic Business Acumen Program through the IMIA Graduate School of Leadership
- One staff member completed a Certificate IV in frontline management
- Integrated child care centre proposal developed and approved by Sylvanvale Board
- Long day Care Partnership with Sutherland Shire Council
- Successfully tendered for three new after school and vacation care services for Teenagers in Werrington, Kellyville and Epping
- Completed nine tender applications during 2007-2008 year



Day Programs

- An increase in the range of programs and activities offered in Day Program services
- Cafe G grand opening, September 2007 at the Sylvanvale Activity Centre. 60 people attended including Scott Morrison, Federal Liberal Member for Cook
- Gecko Lounge opening at the Sylvanvale Activity Centre
- Hugely successful dance events: Disco, Rock n' Roll, Country and Western Night
- Art Ability Exhibition held April, 2008. Participants unveiled and presented a gift to the organisation in celebration of its 60 years
- Bush Regeneration Program commenced with Sutherland Bush care and a new Croquet Program commenced with Sutherland Croquet Club
- New African Dancing and Drumming Program commenced in October 2007 and a spectacular performance by clients delighted families and friends on Mother's Day 2008
- New Sensory Room in Head Office constructed in December
- Six Day Program Social Educators commenced and completed their Cert. IV in Disabilities in 2007. Six Day Program Social Educators commenced their Cert. III in Frontline Management in April, 2008 through Gymea TAFE
- Day Program Manager awarded Executive Certificate for the successful completion of Strategic Acumen
- Day Programs successfully completed IMF Audit for 2007 and FACSIA Audit for 2008
- Integrated service model trialled with New Era Disability Service May 2008
- Opening of The Fire House on 19 April, 2008 by Hon. Kristina Keneally, Minister for Disability Services, Minister for Ageing. Community Participation and Post School Options programs will be run from the facility. This facility is already at full capacity.

Accommodation

- Growth of Sylvanvale's footprint in North Western, South Western and Southern areas of Sydney
- Establishing a new Accommodation Manager structure for future growth
- Establishing a dynamic Regional Management Team
- The implementation of Inclusive Communication and Behaviour Support Training Strategies (ICABS)

Southern Region

- Services have grown from 9 to 14 Group Homes; 3 to 5 Community Living Services; and an introduction of 2 new Criminal Justice Services
- Inclusive Communication Behaviour Training completed by all Accommodation Managers to ensure Communication Systems available to all the residents
- Accommodation Managers completing their Cert IV in Frontline Management
- Increased participation of all residents at local events, activities and interest groups

Northern Region

- Opened two new houses at Cranebrook and St Clair
- Increased Service Users by 9
- Increased staffing levels by 20 new staff
- Provided a new in-home service at Castle Hill
- Residents operate 3 new local market stalls
- Assisting with Meals on Wheels
- Engaged 5 volunteers
- Collaborated with two other Service Providers in the Mountains to provide staff training in Mental Health First Aid, Manual Handling, Physical Assault Response Training (PART), Aged Care and ICABS training. 15 staff also completed Cert IV in Disabilities, 5 AM's commenced Front Line Management Training
- Implemented the Community Service Orders Scheme

Achievements 07-08



"Hi Lynne

Just wanted to let you know I had lunch yesterday at a Schools Expo held at Sutherland Basketball Stadium. I understand that Sylvanvale prepared the lunch.

The food was well prepared, fresh and flavoursome. I could go on and on... I was very impressed. You should all be proud of your excellent work!!"

Stacey Cox
Australian Business Limited
Apprenticeships Centre
Westfield Office Towers

"Thanks to Sylvanvale Catering for making my Office Opening such a success!!"

Barry Collier MP
Member for Miranda
Parliamentary Secretary

Catering

- All staff completed a food handling course
- 33 new customers
- Advertising in 3 prominent magazines/papers
- 3 staff completed Greenacre competency based wage system
- 2 supported employees can now bake unsupervised
- Menus now reviewed and changed twice a year
- 2 new volunteers
- 3 new employees
- Catering is moving to Boys Town Engadine!

Fundraising

- Launch of the Sylvanvale Foundation in the Sutherland Shire and the Blue Mountains
- Development of brochures, banners, display boards and merchandise
- New partnerships with Westfield and Hooters Cronulla
- Successful Cronulla Charity Golf Day and Celebration Dinner
- Increase in volunteers by 54%
- Annual visit by Sharks football team to Day Programs
- Participation in Westfield Charity Day

Human Resources

- Introduction of Employee Assistance Program
- Successful submission of Equal Opportunity for Women in the Workplace Agency report
- Compliance met for ISO and DSS Accreditation
- Appointment of full-time Learning and Development Coordinator
- Implementation of standardised recruitment and selection process
- Reviewed Work Covers claims experience and classifications codes resulting in substantial savings on premiums



Property and Transport

- Rockdale Fire House Refurbishment completed April 08
- Kellyville Group Home \$1.2m purchase and planning completed
- Bathroom renovations and upgrades completed at 3 group homes: Sylvan Lodge, Bobbin Place and Kelsall Place
- Carter Road Group home renovations completed
- SAC roadworks valued at \$100,000 completed in July 08 with the support of funds raised at the Charity Golf Day
- Mikarie Place upgrade and installation of 15 new telephone lines
- Kiora Road units, Miranda purchased for community living.
- Several major maintenance projects completed to ensure property quality
- Transport qualified for Fuel Tax Registration
- Provided transport to the Jannali after school program to enable their continuing viability
- Transport and Sylvanvale volunteers supported the Community Service Program

Administration

- IT Roll-out and Help desk
- Company name change to Sylvanvale Foundation
- Implementation of new branding across the organisation

Finance

- Introduction of management reporting system
- New purchasing procedures
- Salary Packaging enhanced
- Building depreciation included in the financials thereby complying with Australian Accounting Standard AASB116
- New investment strategy implemented to maximise our investment returns
- Upgraded banking software
- Riteq infrastructure rolled out with the new IT platform



Suzanne Gibney enjoys taking and delivering lunch orders.

Our Core Themes

The 2007-2009 Strategic Plan set four themes as signposts for the organisation over the coming years: **empower, promote, improve and sustain**. These themes define our thinking and drive the delivery of quality outcomes for our clients. In this section we include some examples of these themes in action.

Empower

“We believe in the individuality and worth of every person and recognise the importance of self determination. We encourage participation and involvement at all levels of the organisation and we are committed to creating opportunities for growth, development and learning”



Squiggle Seats

Many children with physical disabilities find it very difficult to stay upright whilst in a seated position. This single problem impacts educational, physical and social outcomes. In 2007 we successfully applied to DADHC for funding to obtain Leckey Squiggles Seats. Jay is four years old and his new seat has made all the difference to his life. He is one of ten children who can now sit up at meal times, participate in social group times, class time, and life - thanks to our new Squiggle seats.



Lyndall Hits The Market

Lyndall had a deep desire to learn new skills and meet new people, so staff at our Hillview Road Group Home in Katoomba, encouraged her to enrol at the local community college to broaden her network. Now, Lyndall is a regular stall operator at the Lawson Markets and a popular regular at several local community luncheons. Her courage to get out there and connect with others is an inspiration.



Erica's Cooking

Erica has been with Sylvanvale Catering for over ten years, starting as a dependent employee needing regular supervision. She has now developed strong skills within the catering area that enable her to work more independently. Erica can now complete catering tasks on her own, and has mastered the skills to work independently in making slices and other food items.



Community Living Opens up a New World

Minister Keneally recently received a letter from Valda Lang with the story of her daughter Julia Lang who lived in institutional care for 20 years and moved to Sylvanvale community living almost 17 years ago. Julia has a physical disability, an intellectual disability, epilepsy, is non verbal and has very high support needs. This is an eloquent story of enduring love. Julia appears to be delighted that she can now make her needs known to others. Her patience and tolerance have increased enormously.



Cafe G

Café G opened at the Sylvanvale Activity in September 2007. The Café is an innovative program developed to enhance and broaden the food preparation, cooking, serving, money management and cleaning skills of our Day Program Participants.

Allan, Jennifer, Rhonda, Kathy, Pam, Lynne, Rosland and Brian regularly work at the Café which has been busy catering for many Sylvanvale events and other community events including events for Civic Disability Service, St George Special School and Pole Depot.



Greg Wilson is a colourful member of the Sutherland Activity Centre.

Our Core Themes

Promote

“We will work collaboratively with local people, businesses and organisations to foster co-operation and maintain key strategic alliances. We will actively promote the contributions and successes of our community and we will seek partners to effect positive change”



Sylvanvale Foundation Launched

It was a big day! The official launch of our new name was held at Elouera Surf Club on Friday 29 February 2008. The event was well attended by Board members, government representatives, Sutherland Shire Councillors, other disability service providers, clients, families, friends and staff.

Councillor David Redmond, Mayor of Sutherland Shire revealed our new logo and acknowledged the significant impact Sylvanvale has made in the Shire and Blue Mountains regions since our beginnings in 1947 as the Handicapped Childrens Centre of NSW.



Charity Golf

The annual Cronulla Golf Day is one of our most successful fundraising events. The day consists of a Barbecue lunch, golf and dinner packed full of entertainment, raffles and an auction fronted by TV and radio personality, Glenn Wheeler. It was again a wonderful Golf Day for the Sylvanvale Foundation. Our sincere thanks to our dedicated volunteer Golf Day Committee, the Cronulla Golf Club and Glenn! (Glenn has also recently formed a key group of high profile businessmen to support the Sylvanvale Family Fund.)



Shark Attack

The annual visit by the Cronulla Sharks football team is one of the most popular events with Sylvanvale clients. Sharks “gear” is almost mandatory and autograph signing goes on all day. This year our clients welcomed the players with African drumming. They then rubbed shoulders with their favourite NRL team over a sausage sizzle provided by the Sharks Marketing Team. Afterwards a couple of the players joined us for a special Haka farewell. Thank you Sharks!



Our Fire House Opens!

On the 18th April 2007 we officially launched the 'Rockdale Fire House'. The Hon. Kristina Kenneally, Minister for Disability Services, Minister for Ageing attended this special day and presented a speech to all the parents, carers and grandparents who attended. Everyone was very impressed with our new site. Thank you to our Catering department for supplying and serving their beautiful slices and gourmet foods on the day.



Boot Scootin' at The Gecko

In November 2007, the The Gecko Lounge opened with our first 'Glitter' Retro Disco Night. Since then, the Lounge has been in regular use for client events and celebrations including 'Lets Rock', a Rock'n'Roll 70's, a wild African Drumming event for Mother's Day and an amazing Country and Western Boot Scooting Ho Down (with hay bails, farm animals, and a dashing white stallion!) Over 110 clients, their family and friends and a number of local disability services and schools also attended.



Victor Azzopardi loves dance class at Ettinghausen's Dance Studio.

Our Core Themes

Improve

“We will seek new opportunities and new markets to grow our business. We will find solutions and deliver effective services to individuals. We will encourage diversity and continue to deliver a comprehensive range of disability services that reflect individual and community needs”



New Learning and Development Coordinator

Catherine Maitland has the role of facilitating change, managing learning and development and building an overall learning culture for Sylvanvale. This role encompasses a broad range of activities designed to improve the capabilities of all staff across the organisation, not only the technical skills and knowledge but also attributes, attitudes and behaviours.

She is currently designing and implementing a three stage induction program for new staff and a training strategy to ensure all staff receive appropriate learning and career development opportunities. Her warm, supportive personality makes her a pleasure to work with!



New Day Programs

Several new day programs commenced this year: Bush Regeneration; African Drumming and Dancing; Croquet; Café G; Fun and Fitness; Creative Dancing; Mosaic; Fishing; Shopping; Sewing; Sensory; Music; Retail Management of Sylvanvale's Opportunity Shop and Communication Programs which included the development of Chat Books, Choice Boards and Cards and Communication Dictionaries. Each program enables participants to express, communicate and to be part of a service that caters to their abilities.



Let's Do Stuff!

In March 2008, Colorado Drive, St Clair opened its doors to Thomas, Daniel and Sharon, an inspiring group of individuals who are thriving in their new home. An opening event, “The Family Barbeque” enabled families to meet staff and provided a forum to discuss goals and aspirations for these three young adults who are endeavouring to forge connections with their local community and gain new living skills. Their motto is now “Let's Do Stuff!” and recent activities have included roller skating, swimming, hydrotherapy and visits to the Blue Mountains.



New Horizons

Julie is a long term resident of Gladstone Rd who has really branched out with her community access this year. Over the years Julie has walked by herself to Katoomba nearly every Saturday to shop, have lunch and meet the shopkeepers. This year she decided to venture further afield and now, once a month she independently walks to the train station, purchases her ticket and travels 1 hour to the big City (Penrith) enjoying the excitement of new environments and shopping choices at Penrith Plaza.



Hydrotherapy Volunteers

When a few of our regular hydrotherapy volunteers in the early intervention service and school decided to pack their bags and caravans and go travelling we were in desperate need of new volunteers! The St George Sutherland Leader and the Sutherland Community radio took an interest in our plight. The Leader ran an article and the radio station gave us air time. To our delight we were inundated with volunteers to assist not only with hydrotherapy, but all aspects of volunteering from office work to bus driving and lawn mowing!



Lisa Davies enjoys fitness classes at Sutherland Leisure Centre.

Our Core Themes

Sustain

“We will plan services carefully and diligently to ensure support is sustainable. We will plan for the future and promote transparent and ethical practices. We will develop long-term strategies in order to build positive futures from within our community and we will ensure our viability through sound management practice”



Making Healthy Choices

After the completion of the ICABS training, Dianne Neilson, the Accommodation Manager at Raine Place implemented a new Communication Program. The residents now use a pictorial shopping book to complete their weekly shopping. Whilst this is still in the early stages, they are also choosing their evening meals and assisting to prepare the meals more than they have ever done before. Their menu now consists of 140 healthy choices and they are enjoying the wide variety.



Making Fitness Fun

Caron from Carmarthen Group Home has developed her own long term strategy for keeping fit and having fun. On a recent visit to her friends at Sylvan Lodge Group Home Caron tried out their treadmill. She just smiled and laughed the entire time! This very quickly became a regular activity for Caron on her visits to Sylvan Lodge. She has now purchased her very own treadmill and uses it regularly with still the same laughs and smiles that we witnessed on her very first treadmill experience. Congratulations Caron!



Hungarian Gypsy Band

Bela Harasty from Rainbow Lodge has been supported to attend many Hungarian day events in the Sydney region and once again is looking forward to seeing his much loved, 'Antal Szalai and his Hungarian Gypsy Band' who are touring in August. In continuing to support the needs of clients of culturally diverse backgrounds we have employed a Hungarian-speaking worker at Rainbow. Kristina's employment means Bela can speak freely in Hungarian and this has offered us new insights into Bela as a person.



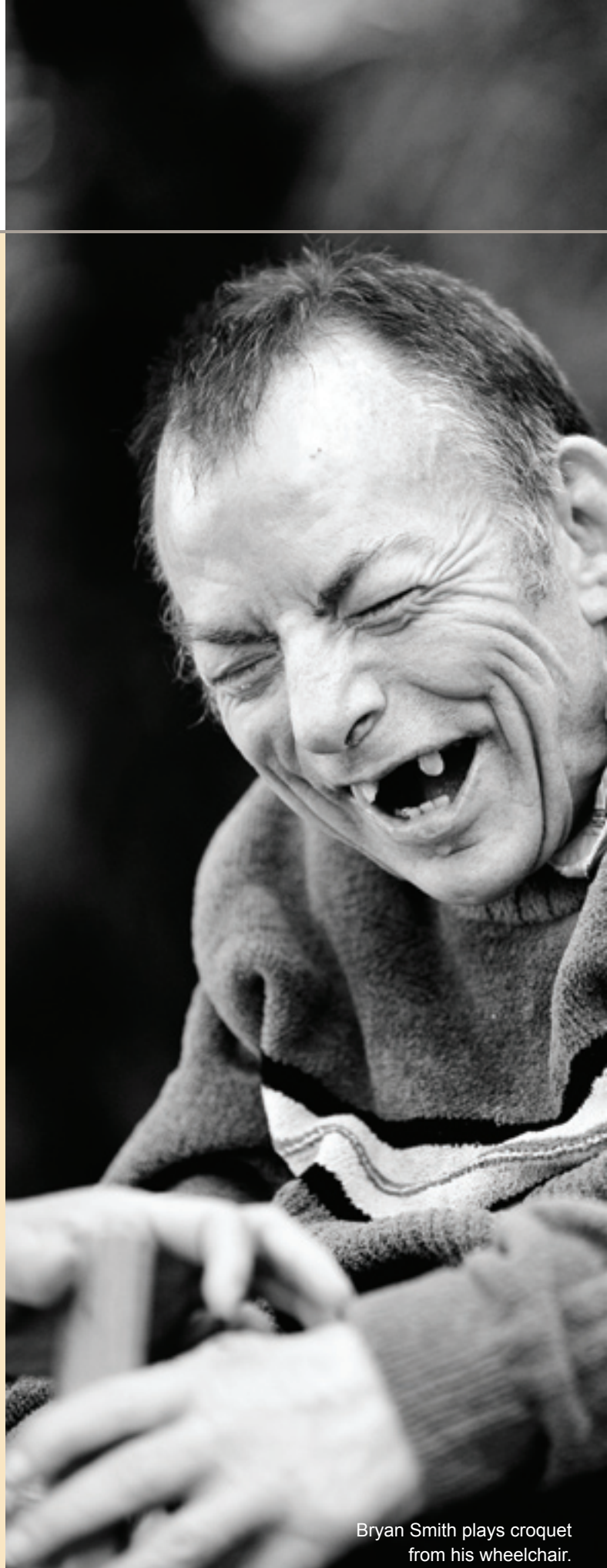
Rainbow brings joy

This year there have been many opportunities created for Rainbow Lodge clients to be more engaged in the community around them and these special people continue to bring joy to everyone they meet. Bill, Winnie and Margie are partaking in art classes, meals on wheels and the Greater Community Transport program – seeing wonderful places such as the Central Coast, Darling Harbour, a trip on the Parramatta River Cat, and the Tobruk sheep station. They also enjoyed Kamahl, Scotland The Brave, Fiddlers Fest, Broadway To Boogie, and Elvis & Friends.



Building Community

This year Sylvanvale Foundation's transport department has been transporting children between Jannali and Como public schools to the Jannali After School program in the mornings and afternoons to enable their continued viability. They are now having discussions with St Josephs School Oyster Bay to enable the program to expand and benefit more families in the area. Diversifying the transport model provides an opportunity for Sylvanvale to maintain a viable transport service.



Bryan Smith plays croquet from his wheelchair.



Susie Shortman proudly admires her dancing friends at Ettinghausens's Dance Studio.



Thank you

We are grateful to the many, many individuals and organisations who give so freely of their time and financial support. Special thanks must go to our major sponsors, Caltex, GIO Insurance, Allco Finance, the Golden Stave Foundation and the Rat Pack Social Club.

Thank you to you all.

Without you, we would not be here today.

You are the heart of Sylvanvale.



Help make a difference

Your generous support will assist us to provide quality, sustainable services.

Together we can make a real difference in our clients lives, by supporting their hopes and dreams and enabling them to maintain a desired sense of independence.

Ways in which you can immediately help make a difference

Donations

All donations of \$2 or more are tax deductible.

Annual Membership

Your financial membership will help to support our work. The annual cost is only \$27.50.

Bequests

Please consider a lasting gift to assist people with disabilities to lead a more fulfilling and active life.

Corporate Partnership

Become a Sylvanvale Corporate Partner. We can work with your team to develop a partnership to meet your needs and engage your employees.

Work Place Giving

We can develop a workplace giving campaign to enable your staff to give on a regular basis and receive an immediate tax benefit.

Become a Sylvanvale Volunteer

We offer a diverse range of volunteering opportunities and would love to hear from you!

For more information on any of these opportunities please call Sylvanvale Foundation on (02) 8536 0100.



Sarah MacKenzie loves to play the piano and is assisted by Suzanne Lawrence (staff).



2 Mikarie Place Kirrawee NSW 2232
PO Box 29 Sutherland NSW 1499

Phone: (02) 8536 0100
Fax: (02) 9521 3610

enquiries@sylvanvale.com.au
www.sylvanvale.com.au

Proudly printed on recycled paper.

