



SYLVANVALE FOUNDATION

Annual Report 2013-14



It's been 67 years since a small group of parents gathered together to establish this organisation, formerly known as the Handicapped Children's Centre, NSW. It was their vision to create a world where children with disabilities could lead the best possible life.

CONTENTS

05	About Us	17	OUR VALUES - INTEGRITY	29	Corporate Governance
07	Chairman's Report	19	Day Programs	30	Our Board
08	Chief Executive Officer's Report	21	OUR VALUES - CHOICE	34	Financial Summary
10	Our Highlights	22	Children's Services	38	Thank You
13	OUR VALUES - CLIENT FOCUS	24	OUR VALUES - TRUST		
14	Accommodation	26	Corporate Services		

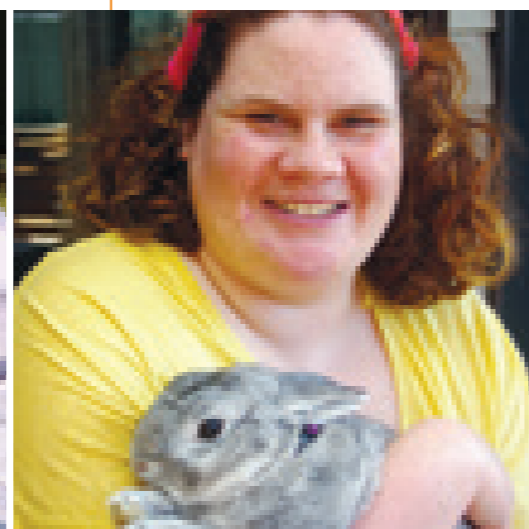
Chairman's Report



Chief Executive Officer's Report



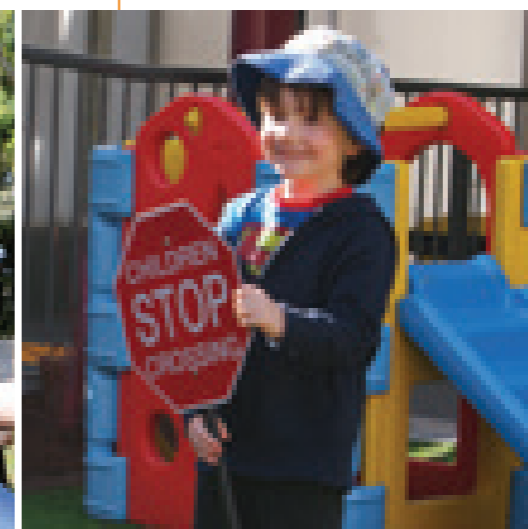
Accommodation



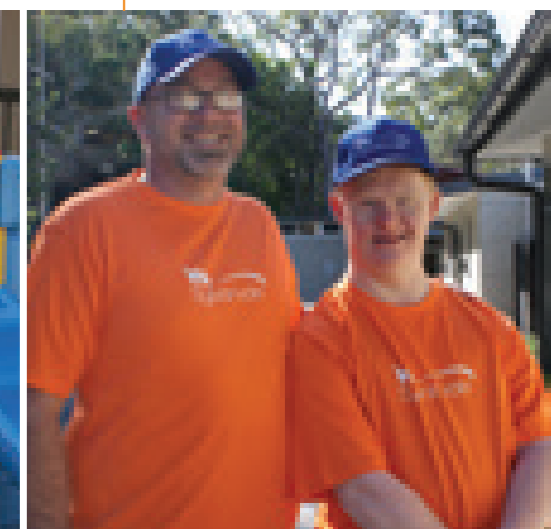
Day Programs



Children's Services



Corporate Services





About Us

OUR VISION

A world where people can live the best life possible.

OUR PURPOSE

Sylvanvale provides ways for children and adults with a disability to live in their communities as they choose.

We do this by providing advice, flexible support, childcare and education.

OUR HISTORY

Sylvanvale was born in 1947 when a group of parents united to establish an organisation that would give children with an intellectual disability a better quality of life.

Today, Sylvanvale provides a wide range of services including: accommodation, day programs, education, employment, respite and early intervention. These services are delivered by over 600 dedicated staff and volunteers including teachers, therapists, community health professionals and childcare workers.

OUR VALUES

At Sylvanvale, people are at the centre of everything we do. This means we value: Client Focus, Integrity, Choice and Trust.

OUR PATRON

Her Excellency Professor Marie Bashir AC CVO Governor of NSW

OUR VICE PATRONS

Mr M Howlin
Mr S Singer
Mr M Tynan

OUR COMMUNITY COMMITTEE

Patron Mrs L Cosgrove
(Now Her Excellency Lady Lynne Cosgrove, wife of the Governor General.)



1961



1982



1992

Chairman's Report

It has been an absolute privilege to be part of Sylvanvale's journey since 1999 and to provide the Board leadership during this period of significant growth, development and financial stability.

There is a poignant message for me in the words of the beautiful, well known duet sung by Andrea Bocelli and Sarah Brightman, *It's Time to Say Goodbye*. Sadly, after 15 years as the Chairman of the Sylvanvale Foundation Board of Directors, I believe the time has come for me to say my own "Goodbye".

It has been an absolute privilege to be part of Sylvanvale's journey since 1999 and to provide the Board leadership during this period of significant growth, development and financial stability.

I would like to extend my sincere thanks to our Patron, Professor Dame Marie Bashir AD CVO, Governor of New South Wales, who retired in October 2014. We were privileged to have Her Excellency visit us on several occasions and we are very grateful for her interest and support over the years.

The launch of the book *Wednesday's Child* by former parent Ruth St Leon, in December last year by The Hon. John Ajaka MLC, underlined our commitment to the principle of equality of opportunity for every child with a disability.

It is with great pride that I can say that Sylvanvale has always remained true to the original vision

of those families who worked so hard to create this organisation and a better quality of life for children with an intellectual disability.

Today, Sylvanvale is managed by individuals with extensive skills, experience and, most importantly, a genuine passion for our cause.

As I reflect on the last 15 years we have seen formidable teamwork and support for our Board from management, staff, families, community and corporates all contributing through their generous time and sponsorship together with support from all levels of government.

This great team effort has enabled our growth in both services and reputation. It is thanks to these strong partnerships that I am confident that Sylvanvale will continue to travel a successful path in the challenging and changing future environment where the focus will be on the essential management of the balance between the old regime with an emphasis on control, to the new era of individual choice.

To all those who have made their respective contributions in time, effort and financial support, please accept my sincere thanks. The

baton will be passed to the current Directors who are seeking re-election together with those who will join the Board after the Annual General Meeting. May the passion to realise the vision for a future where our clients are the focus of all our endeavours, be achieved.

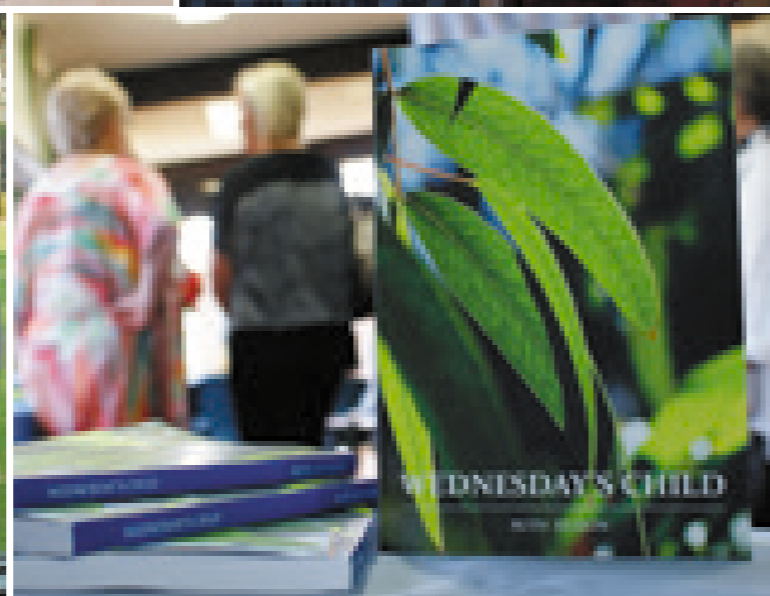
Special thanks to Alan Bish, a Board Director for many years, who is now the Chief Executive Officer and who has made a significant contribution in that new role.

Although I am retiring from the Board I intend to continue to support Sylvanvale. My sincere best wishes are extended to our new leadership as they guide Sylvanvale into the future.

My thanks go to one and all. It has been an honour.

Lorna Stone

Lorna Stone AM
Chairman
Sylvanvale Foundation Board



Chief Executive Officer's Report

This was a successful year of consolidation as we strengthened our commitment to deliver more choice and control to our clients and families.

It's been 67 years since a small group of parents gathered together to establish this organisation. It was their vision to create a world where children with disabilities could lead the best possible life. Our vision, purpose and commitment to the families we serve have not changed.

This is my second annual report and I continue to be inspired by the achievements of our amazing clients and their families. I am also deeply grateful for the generosity of our volunteers and community supporters as well as our employees.

This collaboration enables us to strive for excellence in day programs, accommodation, specialised nursing services and integrated childcare. It also allows us to offer value adding services like in-home respite, transport and Moving with Life.

Person Centred Planning has been a fundamental building block in our service model for several years. As a result, we welcome the sweeping new changes under the National Disability Insurance Scheme (NDIS).

As we enter the first year of a new three year Strategic Plan, we have anticipated and prepared for the transition from traditional models of funding and service delivery. Going forward, we will continue to conduct our Family Forums to communicate the changes.

INNOVATION & CHOICE

In the last year we have strived to become more flexible and innovative in the way we adapt to the changing needs of those we serve.

- Our Caringbah accommodation service was transformed to include 24 hour nursing support to provide a client and her family with a viable alternative to permanent hospitalisation.
- The Communities Around Kids program and Mikarie Child Care Centre were nominated as finalists in the *NSW Disability Industry Innovation Awards*.
- The introduction of a model of accommodation based on Family Governance at Gibbons and Austral, allowing families involvement in the decision making process.
- In October 2013 we launched a new pilot accommodation model to move young adults with disabilities out of aged care. We are deeply proud of this initiative and feel privileged to have been able to offer this service.

We were delighted to recently receive confirmation of Third Party Verification against the new National Standards for Disability Services. This is independent endorsement of the quality of our services.

WITH SPECIAL THANKS

The achievements of the past year detailed in this report would not be possible without the support of many individuals, volunteers, families, therapists and all our employees, local businesses and community organisations, foundations and government.

We gratefully acknowledge our outgoing Chairman, Lorna Stone for her outstanding support and guidance over the last 15 years. Lorna has been the Chairman and Board member of Sylvanvale Foundation since 1999. I am delighted to announce that she was appointed as a Member of the Order of Australia (AM) in the 2014 Queen's Birthday honours list for her service to Sylvanvale and other community organisations.

Finally, particular thanks must go to the Sylvanvale management team. Their passion and dedication is a daily inspiration.

It is my great privilege to lead this wonderful community based organisation and I thank the Board of Directors for their commitment, courage and support.



Alan Bish
Chief Executive Officer



'Our vision, our purpose and our commitment to the families we serve have not changed.'

Alan Bish



Our Highlights

Tokyo

Alex Butters and Mark Walters present research results at a Tokyo conference



600

Over 600 clients supported across the Sydney region



Lorna

Appointed Member of the Order of Australia (AM) in the 2014 Queen's Birthday Honours



138

Day program clients with 53% purchasing a service using an individualised funding package



Tokyo

Alex Butters and Mark Walters present research results at a Tokyo conference



600

Over 600 clients supported across the Sydney region



20th

Sylvanvale Catering 20th Anniversary



Launch

Moving Young People out of Aged Care, Taren Road



43

Our 43 group homes provided 24/7 support



Finalist

NSW Disability Industry Innovation Awards 2014



Launch

Moving with Life program



153

Children attend Mikarie Child Care Centre in its second year of operation



818

Volunteers donated 18,660 hours



Launch

24 hour Specialised Nursing Support, Caringbah



129

Children aged 5-18 attend After School and Vacation Care services



Launch

In-Home Respite program



A photograph of a woman in a wheelchair being pushed by another woman in a garden. The woman in the wheelchair is wearing a light blue top and has a white device around her neck. The woman pushing her is wearing a patterned top and glasses. They are both smiling. The background shows a brick building and a garden with colorful flowers.

Our Values

CLIENT FOCUS

Sylvanvale implements and monitors Person Centred Planning across all our services. This enables us to respond to the specific needs of each client.

'We were very, very thankful that Sylvanvale were willing to be so responsive to Rebecca's needs. They hired registered nurses, obtained new equipment and got on top of all the issues concerning Rebecca's care. We couldn't have taken her back home after hospital. The physical care and comfort she receives here is wonderful. It's like a God-send having this place.'

Eleanor Moore, mother of Rebecca, aged 27.

Accommodation Services

The year ahead will see us focus on raising awareness of the opportunities available to our clients and their families under the new NDIS model.

Sylvanvale's accommodation services extend across Sydney from Caringbah in the south, west to the Blue Mountains and north to Belrose. We currently operate 43 group homes with shared care and 24/7 support. We also provide drop in support for 22 residents in a number of community and government provided houses.

The last year has been a period of consolidation, ensuring the foundations are in place to prepare our clients and their families for the introduction of the new disability model of support under the NDIS.

Our focus has been on improving the way we deliver individual services in order to optimise the independence and social participation of every client. For this reason Sylvanvale offers a broad range of accommodation services.

- Support for children and young adults with voluntary and statutory out of home care;
- Support for clients leaving residential aged care with high complex medical support needs;
- A Community Justice Program model.

HIGHLIGHTS 2013-14

- Our Communities Around Kids program was nominated as a finalist in the *NSW Disability Industry Innovation Awards*. This innovative program is funded by NSW State Ageing Disability and Home Care. It is a unique model which creates a community of high quality support around each client.
- The Caringbah accommodation service was successfully restructured to include a wellness model of support, incorporating disability, allied health supports and nursing. This unique facility supports 13 clients with complex disability and health care needs.
- Our Family Forums have enabled us to keep our families informed of the sweeping changes in the sector and helped them better understand the opportunities and impacts for them and their children as they move into the NDIS.
- In October 2013, we opened our first service providing alternative accommodation for young people in residential aged care. Taren Road now has seven clients aged from 22 to 45 years who were previously living in residential aged care. Sylvanvale is delighted to partner with St George Community Housing to provide young people with

disabilities more appropriate accommodation.

- Camp Break Away, held in July at San Remo, enabled a number of clients to take a holiday for the first time in their lives. Whether they were at the Reptile Park, riding the bikes, going to the movies, bowling, playing the piano, listening to the band, the camp became a turning point in the social development of many individuals.
- New Family Governance models at Gibbons and Austral for the ex-Kingsdene resident's families have meant greater involvement in the governance of these group homes.
- New dwellings have been approved for nine clients who joined Sylvanvale from the Kingsdene Special School & Residential Service in 2012. The two new homes in West Pennant Hills and Baulkham Hills will be completed in 2015.
- The successful evacuation of 20 Blue Mountains residents to Taren Road, Avina Vans Caravan Park and the Katoomba Town Centre Hotel during the fires in October 2013. The professionalism and dedication of our staff team was outstanding.
- 14 clients with Individual Funded Packages chose Sylvanvale to deliver their service. These

comprise ADHC funded supported living packages and individual supported accommodation packages.

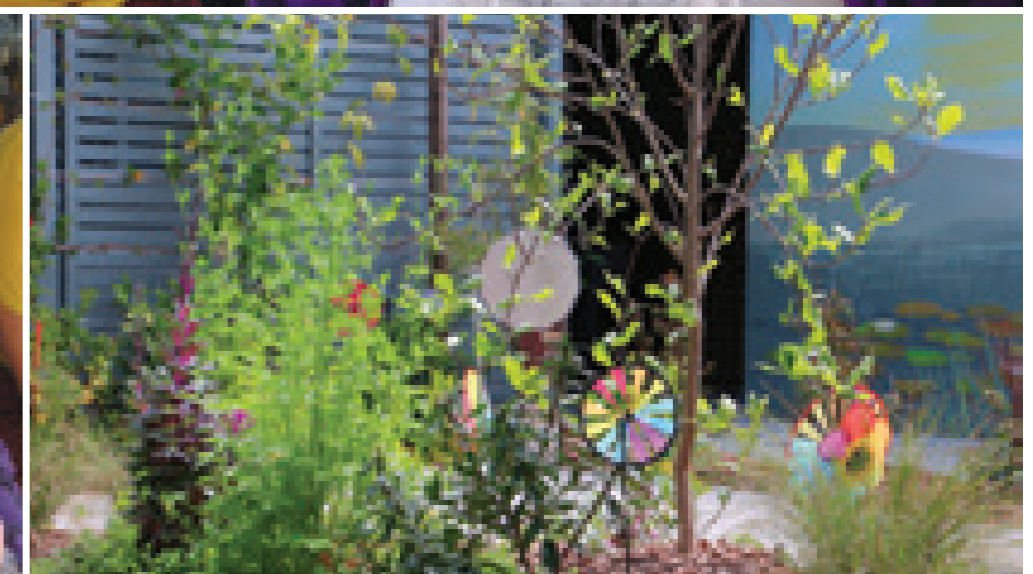
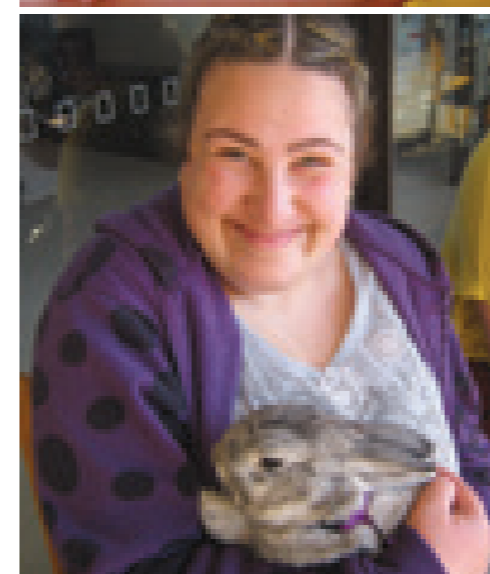
- 73 iPads were generously donated by State Street to accommodation services, enabling clients to communicate their wants and needs more effectively.
- The Big Blue Arts program is a partnership initiative with Campbelltown City Council and Campbelltown Arts Centre. The project enables artists with intellectual disabilities to work alongside professional artists in a studio environment.
- Two clients graduated from the Community Justice Program into independent living without ongoing support from Sylvanvale.

- Sydney metropolitan and Blue Mountain clients joined together to represent Sylvanvale at the annual Winter Magic Festival, the Blue Mountains' highest profile event where artists, musicians, dancers, drummers, choirs take over the town.

The year ahead will see us focus on raising awareness of the opportunities available to our clients and their families under the new NDIS regime. The Person Centred Planning model of support has been central to our way of thinking for several years and we will continue to strengthen our service in order to offer every client more choice and more control of their daily lives.

'We are incredibly happy and relieved – what a wonderful service you provide.'

Amanda Middleton, Parent





Our Values **INTEGRITY**

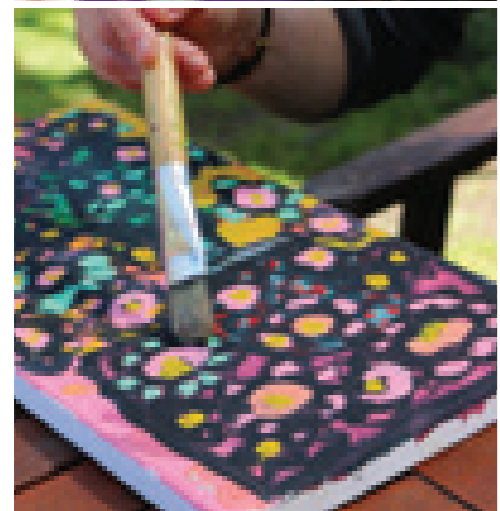
Sylvanvale nurtures and builds community capacity and supports, especially for children with disabilities.

'It's great to see the progress the children make in the pool. They are so nervous at first but gradually their confidence grows. Most aren't able to talk very much but they communicate in various ways and their speech slowly improves. The teachers are wonderful and we love spending time with them to help these delightful children. It's our way of giving back and we'll keep doing it as long as we're able.'

Barbara and Peter Miller assist our exercise therapist and early education teachers with weekly hydrotherapy sessions for children with autism. They have been Sylvanvale volunteers for 14 years and were Cook Community Award Recipients in 2013.

'I am so grateful for all your efforts with Nathan's social and play skills. I've never seen Nathan so happy since he began at Sylvanvale.'

Anne Khoury, Parent



Day Programs

Most importantly, the programs offer a wonderful safe environment for making friends, keeping active and having fun.

Sylvanvale Day Programs provide social and recreational activities that promote learning, skill development and enable access, participation and connection within the community. Our experienced team is trained to meet individual needs. The programs are flexible, highly varied and well resourced. Most importantly, the programs offer a wonderful safe environment for making friends, keeping active and having fun.

Over the last two years Sylvanvale has embraced Person Centred Practice. This means that our clients have genuine choice and control over the services they receive. It also ensures that we can more easily and efficiently deliver meaningful outcomes tailored to suit each individual.

This year, our Day Programs team continued to develop and improve the internal systems to ensure we have the processes in place to manage individualised funding packages in a way which places the client as the focus of our entire service delivery.

Our programs now include:

- Community Participation
- Transition to Work
- Life Choices and Active Ageing.

Within these programs, clients can choose how they would like services delivered to them. Options include:

- Centre Based with Community Access
- Individual Community Based Options
- Self Managed Model.

Participants in all service model options make decisions about their own services and have choices in the activities that best meet their needs, interests, life stage and circumstances. There are many overlaps between these model options so it is possible to combine elements from each one in order to participate in chosen activities.

HIGHLIGHTS 2013-14

- Sylvanvale supported 138 people in day programs this year with 53% of those purchasing their service using an individualised funding package.
- Our centres in the Sutherland and Rockdale areas provided 2,500 community activities over the past year. These activities support our clients to make connections in their local areas based upon the individual's interests and skills.

- Thanks to St Johns Park Bowling Club, Sylvanvale staff supported two clients, Alex Butters and Mark Walters to improve their communication skills by participating in the Sydney University Inclusive Research Project. Their involvement led to the exciting opportunity for them to present their research results at a conference in Tokyo, Japan.

- The Sylvantones choir completed more than 40 performances at local community events, in aged care services and for local community groups and clubs.

- Sailing on the Young Endeavour has ignited a passion for sailing in a number of our clients who are now attending the Cronulla Branch of Sailability NSW with support from Sylvanvale.

- Day programs supported more than 25 student placements, providing an opportunity for clients and staff to interact with students from different professions and cultures.

In 2013-14 we successfully strengthened our Day Programs model to improve the efficiency of our systems, the quality of our care and the flexibility of our service offering.

'My only regret is that I didn't get Connor into Mikarie earlier. He's come such a long way in the six months he's been there. They understand his needs. They are better equipped to have him. And he absolutely loves it! It's a lot less stressful for us as a family because we know he's accepted. It's also a lot easier now to communicate with Connor. Nothing's a problem for them. Naomi's great. I can't praise any of the teachers enough. I get emotional just thinking about it.'

Michelle Allen, mother of Connor, aged 3 ½ pictured here with Naomi Breen, Manager, Mikarie Child Care Centre.



Our Values CHOICE

Sylvanvale enables families to make informed choices in all their dealings, particularly when considering early intervention supports.

Children's Services

We are committed to delivering services which focus on early intervention, supporting and building upon the unique gifts and dreams of every child.

Providing a diverse range of outstanding services for children with disabilities continues to be the major priority at Sylvanvale. Over the last few years we have re-shaped our services to provide each family with more choice and more control over their child's individual plan and development. We are committed to delivering services which focus on early intervention, supporting and building upon the unique gifts, passions and dreams of every child.

These services now include:

- Early Learning and Education Services
- Private Speech and Occupational Therapy
- Mikarie Child Care Centre
- After School and Vacation Care Flexible Respite Services.

HIGHLIGHTS 2013-14

- Mikarie Child Care Centre celebrated its second year of operation with 153 children accessing the service, receiving 16,019 occasions of service. 6% of enrolments were occupied by children with additional needs, exceeding the national average of 3-4%.
- Mikarie Child Care Centre was also named as a finalist

in the *NSW Disability Industry Innovation Awards* and the *Sutherland Shire Local Business Awards* in 2014.

- The Werrington Teen Time service moved to a new purpose built educational facility, providing clients with access to modern accessible facilities. The feedback from clients and their families has been overwhelmingly positive.
- Sylvanvale provided After School and Vacation Care services to 129 children aged from 5-18 years, across four services located in Sutherland, Kellyville, Werrington and Epping.
- The Education and Early Learning Service provided specialised centre based early intervention supports to 44 children and families. We delivered 2,447 occasions of service across the year.
- The therapy service provided 844 occasions of service through the year, with services in centre and community based settings.
- In conjunction with our partner, The Wellbeing Clinic, Sylvanvale provided 515 occasions of service under the Federal Government's Helping Children With Autism (HCWA) and Better Start programs. These programs have introduced Sylvanvale to both a market and individually funded model of service delivery.

This has been an exciting year of consolidation for Children's Services as we refined our person centred practice model and improved our systems to provide stronger, more individualised supports. Going forward, our priority is to ensure that every family is kept informed of the many changes in the disability sector and the new opportunities available for their child under the NDIS.



'As soon as I walked into Mikarie, I felt it was right. The teachers are passionate and understand that each child is an individual.'

Ainslie Hunt, Parent



'For the first time, our family has support that is appropriate, consistent and ongoing. You can't understand the feeling of regaining some control over your life after such a long period of instability. Sylvanvale offers Jordan exactly what we wanted most for him – loads of personal freedom, the chance to do things he loves while he still can, complete acceptance and great affection. We have the beginning of a very special community – parents feel welcome in the home and included in their children's care, while carers are treated as valuable family members.'

Vanita Connery, mother of Jordan, aged 10.

Our Values

TRUST

Sylvanvale provides the certainty of necessary supports for children with disabilities and their families.

Corporate Services

This last year has seen Sylvanvale firmly align the focus of our activities behind our values and improve the efficiency of each of our business units.

CATERING & THE ACHIEVE CAFÉ

Sylvanvale Catering provides catering for local government agencies, schools, businesses and the public. In September 2013, the service celebrated its 20th anniversary. This year, the customer base expanded to include the Bankstown and St George regions. This business unit provides 15 young adults with work skills training, social skills development and supported employment. In the last 12 months, eight people completed their Cert III in Hospitality and five of those went on to complete Cert IV.

The Achieve Café continues to operate as a hospitality training centre for young adults with disabilities.

RETAIL THERAPY

This year our Caringbah Op Shop was very well supported by the local community. Now in its 4th year in the new street front location, the store provides valuable retail work experience for young adults with disabilities.

Practical skills such as customer service, stock control and handling money are learned on the job with the assistance of 50 volunteers every week. This social enterprise is open six days per week.

VOLUNTEERING

Our volunteers are the heart of Sylvanvale. In 2013-14, 818 volunteers contributed 18,660 hours. This included 140 volunteers from Shire Live; 30 volunteers from the Commonwealth Bank, Scouts who regularly help our Day Programs; event volunteers who support the Westfield GiveAbility Day, the Cronulla Golf Day, the Cook Community Classic; and student volunteer placements from Universities and TAFEs.

Special mention must go to a valued client, Graham Etherden who has been volunteering as a member of the maintenance team for nine years.

We are also very fortunate at Sylvanvale to have wonderful volunteers on call across our business units who give generously of their time to make it the place it is today.

PEOPLE AND CULTURE

At every level of the organisation, the Purpose, Vision and Values that we need to practice in our everyday dealings with clients, staff and third parties are top of mind for every team member. All new employees are now hired based upon the Values model.

In the last 12 months we have moved our human resources

activities away from a skills centric approach to a partnership model which provides more support and a broader skills base to each business manager on a daily basis. This means more training, mentoring and skills support is available to managers, freeing up their valuable time to focus on client needs.



'At every level of the organisation, all new employees are now hired based upon the Values model.'

John McCormack, General Manager Corporate Services



Corporate Governance

We have a number of processes and policies to ensure we meet the expectations of our stakeholders.

BOARD RESPONSIBILITY

Sylvanvale operates as a company limited by guarantee. The Board of nine directors operates with a formal constitution which states its membership, operating procedures and the apportionment of responsibilities between the Board and management.

The current Chairman, Mrs Lorna Stone AM, was appointed in 1999 and the Chief Executive Officer is Mr Alan Bish. Our head office is located in the Sutherland Shire and services are spread over Sydney and the Blue Mountains.

In accordance with our constitution, directors of Sylvanvale and controlled entities hold that position in an honorary capacity and receive no remuneration or retirement and superannuation benefits for their generous time and services.

ACCOUNTABILITY

Sylvanvale is accountable to a number of stakeholders including members, clients, families and all levels of government. Sylvanvale provides regular reports and updates on service and business activities and conforms to annual audit and reporting requirements as determined through regulatory and compliance bodies.

ACCREDITATION & STANDARDS

Sylvanvale is accredited and registered against a number of frameworks that cover reporting requirements, systems and processes to ensure we deliver consistent services that meet the expectations of our stakeholders.

- Sylvanvale Quality Management System (QMS) has been certified to ISO 9001.
- Sylvanvale Disability Services Management System has been certified to DSC 20028.
- A designated agency with the NSW Office of Children – the Children’s Guardian to arrange the provision of out-of-home care.
- NSW Board of Studies (BOS) – Registered non-government school.
- Australian Children’s Education and Care Quality Authority (ACECQA) – National Quality Framework (NQF).
- Recently achieved Third Party Verification against the new National Standards for Disability Services.

Continuous improvement is driven through the organisation using the Plan, Do, Check, Act model. This entails:

Plan: Establish objectives and processes required to deliver the desired results.

Do: Implement the process developed.

Check: Monitor and evaluate the implemented process by testing the results against predetermined objectives.

Act: Apply actions necessary for improvement if the results require changes.

We continually strive for improvement and we constantly self audit to ensure this works.

Our Executive Team is involved in monitoring the outcomes of these activities and policies and procedures are in place for all of our employees.

These steps lead to quality processes that are reliable, consistent and meet expectations.

‘Camp Break Away enabled a number of individuals – who don’t usually have the opportunity – the chance to take a holiday. All of our clients had a truly wonderful time. Whether they were at the beach, riding bikes, playing the piano or listening to the sounds of the band “that rocked” – this camp was such a success! I want to personally thank all of the employees who gave up their valuable personal time to provide support at the camp.’

Tammy Sargeant, General Manager Client Services

Our Board



LORNA STONE AM

Chairman

Appointed 1999

ATCL London, Practice and Theory of Speech, Dip Teacher of the Deaf, College of Advanced Education, Teachers Certificate, Sydney Teachers' College, Member of the Order of Australia. Lorna has a long history of community work with a background in education and sensory deprivation. Lorna has been a recipient of a Cook Community Award in recognition of her work with Sylvanvale. Her experience includes 20 years as a Board Director for Hospital Contribution Fund of Australia (HCF), recently retired, 10 years as a trustee HCF Health, Medical and Research Foundation, local government Councillor, Chairman of a Health Service, Member of an Appeals Tribunal and a former Member of the NSW Legislative Assembly. She continues as a Director of family companies involved in property investments. Lorna's love of her immediate family has developed an intense interest in Family History generally where she is currently the President of the Women's Pioneer Society of Australasia.



DAVID KELLY

Deputy Chairman

Appointed 2000

Bachelor of Aeronautical Engineering (UNSW), post graduate training in People and Financial Management (QANTAS). David is a Fellow of the Royal Aeronautical Society and a member of the Faculty Board for Engineering, Computer and Mathematical Sciences at Adelaide University. David has held a number of Senior Management roles at Qantas over the last 30 years, most recently as Head of Safety & Risk. David was a Sylvanvale parent.



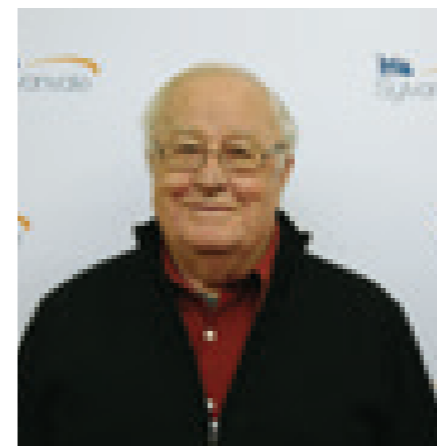
DENNIS DAVIES

Company Secretary

(filled vacancy between July 2013 - October 2013)

Appointed 1996

Certificate in Hospitality, Catering and Business Management. Dennis is a Sylvanvale parent and volunteer driver for Sutherland Shire Community Transport. Dennis joined the Sylvanvale Board in 1996 and became Deputy Chairman in 1999. Dennis serves as Company Secretary. Dennis has extensive experience in hospitality and management. He is also a retired service station proprietor. He is a former member of the management committee of the Handicapped Children's Centre (HCC) from 1976 to 1984, fundraising sub-committee of HCC and Sylvanvale Foundation and former chairman of New Era Independent Centre Living Inc.



KENNETH McDONELL

Director

Appointed 2008

Certified Practising Accountant. Retired after 41 years employed by Sydney Water, elected to represent employees of Board to Board of Management for Sydney Water 1984-1994. Elected to Sutherland Shire Council in 1987 to 2008. Served as a member of all Council Standing Committees ie, Community Services, Works, Finance and Management, Environment and Health Committees. Currently Chairman of Board of Directors of Southern Sydney Business Enterprise Centre.



JOHN SLACK

Director

Appointed 2012

BA (majoring in Actuarial Studies) Macquarie University, Fellow of the Institute of Actuaries (UK) and the Institute of Actuaries (Australia). John has over 40 years' experience in the insurance and funds management industry. He has been the Chief Actuary for two life insurance companies and has served on the Board of a leading life insurance company in New Zealand. He is also a member of a local Lions Club and has served on that Club's Board for over 20 years.



ANTHONY ORIEL

Director

Appointed 2013

Extensive career as a Director, teacher and owner of a childcare service, Anthony brings valuable experience implementing regulatory and legislative obligations. He has worked in the childcare and education sectors for two decades, working alongside the NSW Department of Education and Communities and other regulation bodies to operate and maintain a high quality, professional service to families and the community.

Our Board



VINCI DODDS

Director

Appointed 2012

Vinci recently retired from Boeing Australia after 37 years with the company. Vinci had a number of roles at Boeing including Senior Administrator and Business Manager, the latter of which she provided strategic counsel on administrative and business concerns such as office governance, status, tax liability as well as changes and developments in labour laws. Prior to this Vinci also taught commercial subjects at a business college and held accountancy and administration roles in a customs and excise agency. Vinci currently volunteers in the Administration Team at the Sylvanvale head office.



ROBERT BROWN

Director

Appointed 2012

Bachelor of Commerce, Major in Accounting and has had a long career in the finance and aviation management sectors. Robert is currently contracting for CT Freight (largest independent freight forwarder in Australia). Previously for 12 years he was Manager International Terminals for QANTAS Freight (formerly Australian air Express) and managed international cargo handling customer operations and contract negotiations with international airlines in Australia and the USA operations. Robert also worked as Freight Consultant at Sydney Airport for six months, demonstrating strong regulatory compliance with government agencies and airport authorities. Prior to this Robert had a number of roles at Ansett Air Freight, where he worked in later years as General Manager International providing management of the Australian, UK and USA offices.



JASON JURETIC

Director

Appointed 2013

Jason has rich experience from time as a pilot in the Royal Air Force and also as co-founder of IT company Parcelhouse International which merged with Swedish company Marakanda to form eBuilder. Jason also has experience in the not-for-profit sector having volunteered in numerous roles for the Disabled Surfers Association, Scouts Australia, Exodus Foundation, Surf Life Saving Australia and Duke of Edinburgh Award Australia.



DEBBIE CROWLEY

Director

(resigned October 2013)

Appointed 2011

Teachers Certificate from Dunedin Teachers College. Debbie has worked as a teacher in New Zealand and Australia, and has also held broking and trading roles in the finance and banking sector. Debbie is owner and manager of an accommodation guest house in the Sutherland Shire. Debbie has a long association with community organisations such as the Big Sister Foundation, Southern Sydney Therapy Centre, Gynea Community Aid and Information Service, and the Hazelhurst Regional Gallery and Arts Centre. Debbie also works as a foster carer on behalf of the Department of Community Services.



MICHAEL LYNCH

Director

(resigned November 2013)

Appointed 2011

Bachelor of Commerce and Masters in Applied Finance. Michael has had a long career in the finance and banking sectors in Australia and overseas and is currently a Managing Director of a boutique corporate finance firm, ICS Advisory. Michael brings to the Board a wealth of financial management knowledge.



ALAN BISH

Director

(resigned November 2013 to become Acting Interim CEO)

Appointed 2012

Advanced Certificate in Management, Certificates in Production Engineering, Value Adding Management, Fitter Machinist and Toolmaker Trade Certificate. Alan first served on the board from 2004 until July 2011. He recently re-joined the board in February 2012, after a short break. Alan is currently a member of the Audit and Risk and the Investment Committee and is Chairman of the Master Planning Committee. Alan has an Advanced Certificate in Management and is a Production Engineer. He is a successful local business owner. Alan is community spirited and shows great passion for the disability sector.

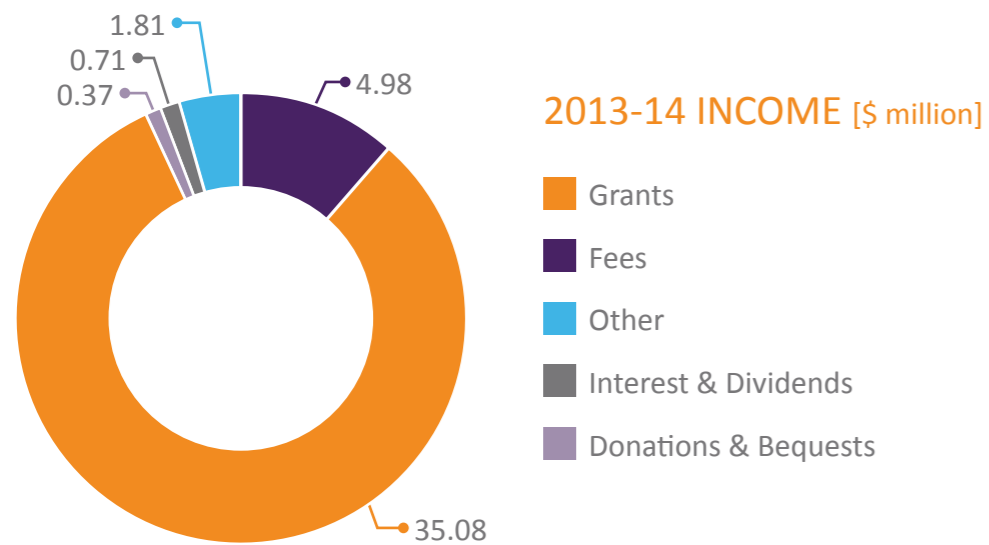
Financial Summary

Sylvanvale has had a year of consolidation with the full year revenue impact of the Hinkler and Taren accommodation services.

This financial year revenue has grown to \$42.95 million, compared to \$40.05 million in 2012/2013, \$38.34 million in 2011/2012 and \$29.66 million in 2010/2011.

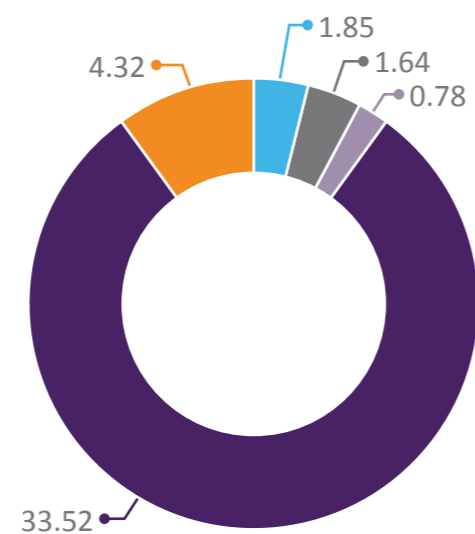
Income from donations, bequests and fundraising totalled \$0.465 million. Over the past few years we have been the recipient of some large donations which has enabled us to support our range services and strengthen our financial position.

The Board would like to take this opportunity to thank the individuals, community groups and organisations that contributed to and supported Sylvanvale throughout the year.

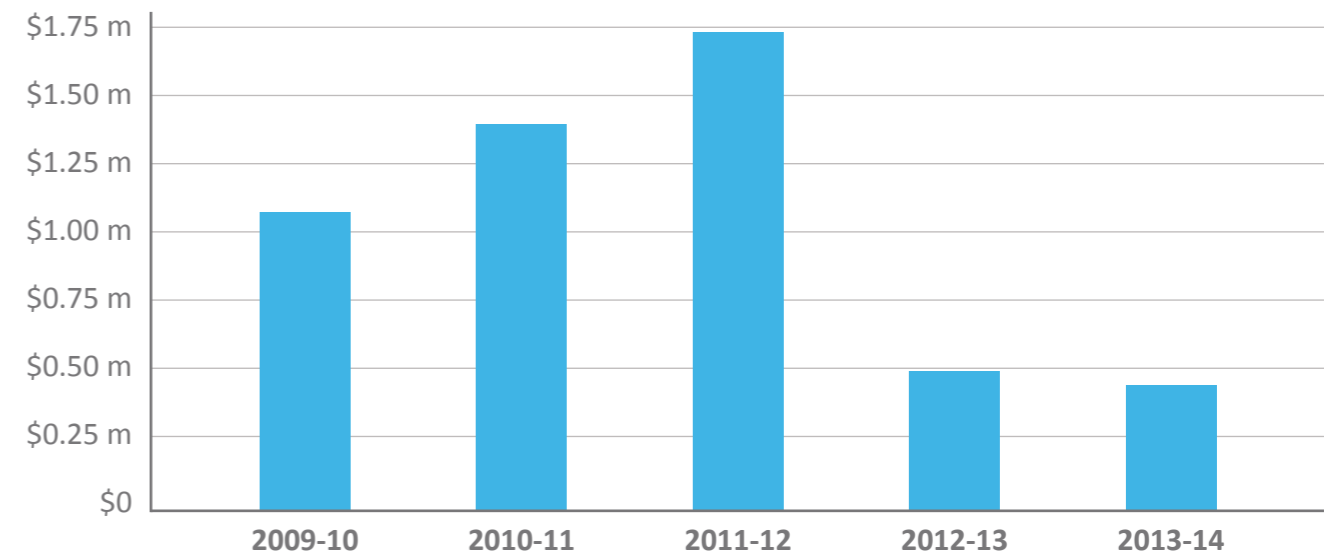


2013-14 EXPENSES [\$ million]

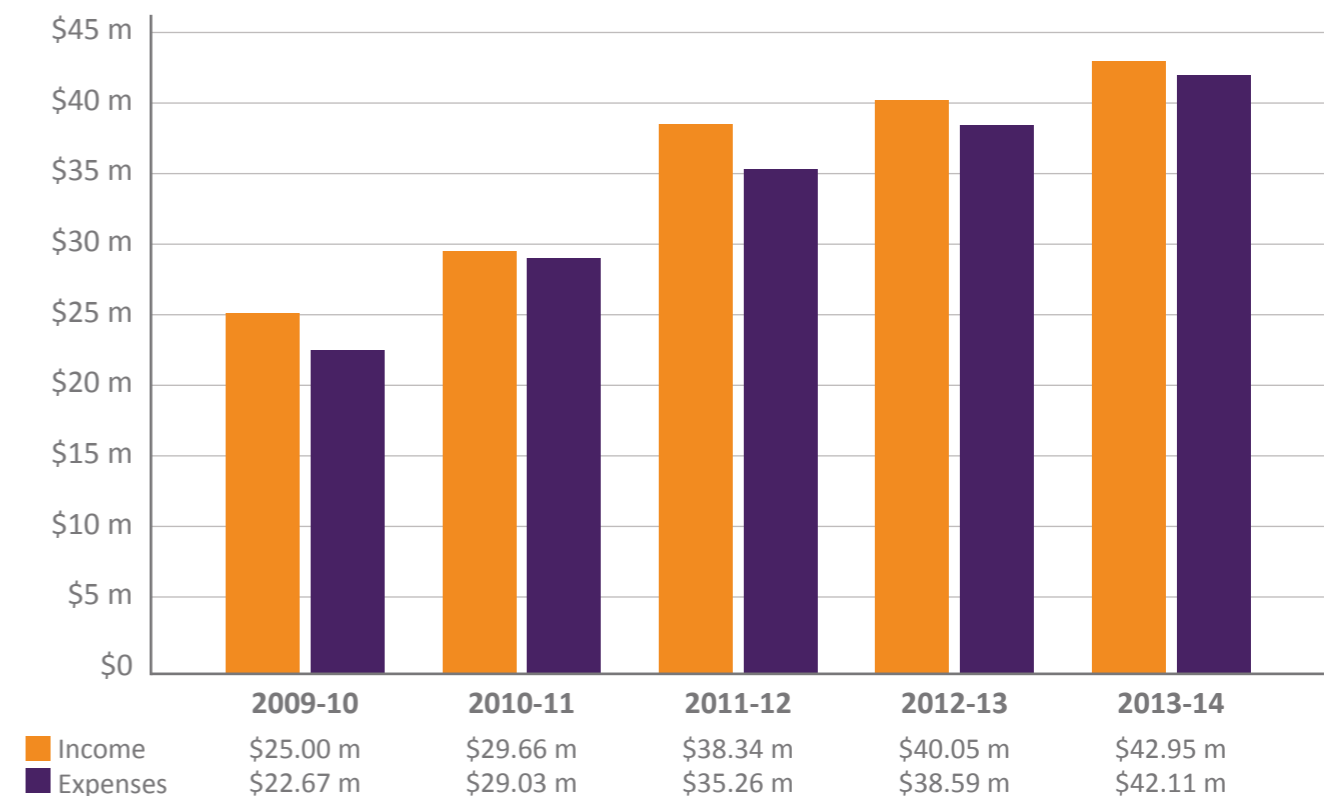
- Employee Expenses
- Other Expenses
- Client Expenses
- Administration Expenses
- Depreciation & Amortisation



BEQUESTS, DONATIONS & FUNDRAISING



REVENUE



Financial Summary

STATEMENT OF PROFIT OR LOSS AND OTHER COMPREHENSIVE INCOME

For the year ended 30 June 2014		
	Economic Entity	
	2014	2013
Revenue	\$42,715,050	\$40,040,567
Other income	\$240,771	\$15,594
Totals	\$42,955,821	\$40,056,161
Expenses		
Administration expenses	\$1,635,969	\$1,381,458
Client expenses	\$1,850,770	\$1,775,650
Depreciation and amortisation	\$784,720	\$1,036,149
Employee expenses	\$33,527,303	\$30,313,512
Other expenses	\$4,316,601	\$4,091,187
Totals	\$42,115,363	\$38,597,956
Profit before income tax	\$840,458	\$1,458,205
Income tax expense		
Profit for the year	\$840,458	\$1,458,205
Other comprehensive income-Fair value gains on available for sale financial assets	\$149,215	\$136,749
Total Comprehensive Income for the Year	\$989,673	\$1,594,954

STATEMENT OF FINANCIAL POSITION

As at 30 June 2014		
	Economic Entity	
	2014	2013
Assets		
Current assets		
Cash and cash equivalents	\$14,883,242	\$13,914,358
Trade and other receivables	\$825,997	\$935,259
Total current assets	\$15,709,239	\$14,849,617
Non-current assets		
Financial assets	\$1,227,186	\$1,072,021
Property, plant and equipment	\$7,337,444	\$7,708,032
Intangible assets	\$489,350	\$397,048
Total non-current assets		\$9,177,101
Total assets	\$24,763,219	\$24,026,718
Liabilities		
Current liabilities		
Trade and other payables	\$6,261,506	\$6,632,787
Provisions	\$395,596	\$327,917
Total current liabilities	\$6,657,102	\$6,960,704
Non-current liabilities		
Loans	\$560,000	\$560,000
Provisions	\$440,271	\$389,841
Total non-current liabilities	\$1,000,271	\$949,841
Total liabilities	\$7,657,373	\$7,910,545
Net assets	\$17,105,846	\$16,116,173
Equity		
Retained earnings	\$16,819,882	\$15,979,424
Reserves	\$285,964	\$136,749
Total equity	\$17,105,846	\$16,116,173

Thank You

We would like to thank the individuals, community groups and organisations that contributed to and supported Sylvanvale throughout the year.

GOVERNMENT SUPPORTERS

Blue Mountains City Council
Campbelltown City Council
Community Relations Commission for a Multicultural NSW
NSW Department of Family and Community Services
NSW State Department of Ageing, Disability and Home Care
St George Community Health
Sutherland Shire Council
The Department of Education
The Department of Families, Housing, Community and Indigenous Affairs
Trade, Investment and Arts NSW

BUSINESS AND COMMUNITY SUPPORTERS

AMP Foundation
Amtek
Ausgrid Employees' Children's Appeal
Ausrise Aluminium Pty Limited
Australian Unity
BIC Construction
Big Sister Foundation
Bosco Friendship Group
Caltex Aust. Petroleum Limited
Carers NSW
Charity Greeting Cards
City of Rockdale Rotary Club
Club Central Menai
Club Rocky's
Commonwealth Bank Australia
Cronulla Sutherland Kayak Club
Entertainment Publications of Aust.

GSA Insurance
GyMEA Women's Bowling Club
Jim Gauci Mowing Services
Ladies Probus Club of Grandviews
Lara Jean Association
Lions Club - Caringbah INC
Lions Club - Lugarno INC
Miranda Fishing Club
Miranda RSL Sub Branch
Myer Stores Community Fund
Noble Toyota
Oaclimb Pty Ltd
Ontrack Employment
Owen Hodge Lawyers
Port Hacking Potters Group
Presbyterian Church of upper Blue Mountains
Rat Pack Social Club
Ray White Jannali
Ritchies Stores Pty Ltd
Rotary Club of Caringbah
Rotary Club of Sylvania
SG Fleet Australia
Southern Fasteners
Southern Security Alarms P/L
St Catherine's Friendship Club
St George Sutherland Community College (SGSCC)
St John's Park Bowling Club
State Street
Statewide Cleaning Cloths
Stewart Brown & Co
Sutherland Croquet Club
Sutherland Shire Art Society
SV Partners
Sylvania Women's Bowling Club
Telstra Business Centre Miranda
Telstra Corporation
The Point Bowling Club

The Repair Wizard
Tradies (GyMEA)
Trefoil Guide of NSW
Tynan Motors
Unitech I.T. Solutions
Veolia Water
Westfield Miranda

INDIVIDUALS WHO PROVIDED \$300 OR MORE

Barry Fretten
Barry Martens
Ben Giblett
Bob Li
Chris Brookes
Chrissy Tintner
Clare Smith
Cornelis and Barbara Snel
Denise Gaylard
Dennis Mahoney
Donald Trennery
Dorothy Scott
Doug Morton
Felix Vogelnest
Frances Windon
Garry Beard
Geoff Payn
Graham Thom
Heather Thackall
Janice Mannix
Jim Hancock
Jodi Lillis
John McClelland
Kate Tye
Kay Bunker
Leanne Fretten
Lorna Stone
Margaret Beard
Margaret Colenbrander
Margaret Howland
Melissa Smith
Michael Astolfi
Michael Keenan
Michelle Smith-O'Grady
Mike Storck
Pamela Collocott

Pat Mannix
Phil Duncan
Robyn Cox
Robyn Smith
Rodney King
Rodney Spink
Sal Ragonese
Sandy Wade
Tammy Gaylard
Terry Smith
Tracy Morgan
Turnbull
Tyler James Proctor
William Hooker
Wynne Harasty
Yvonne McDonell





SYLVANVALE FOUNDATION

2 Mikarie Place, Kirrawee NSW 2232 | PO Box 29, Sutherland NSW 1499

T +61 2 8536 0100 | F +61 2 9521 3610 | E enquiries@sylvanvale.com.au | www.sylvanvale.com.au